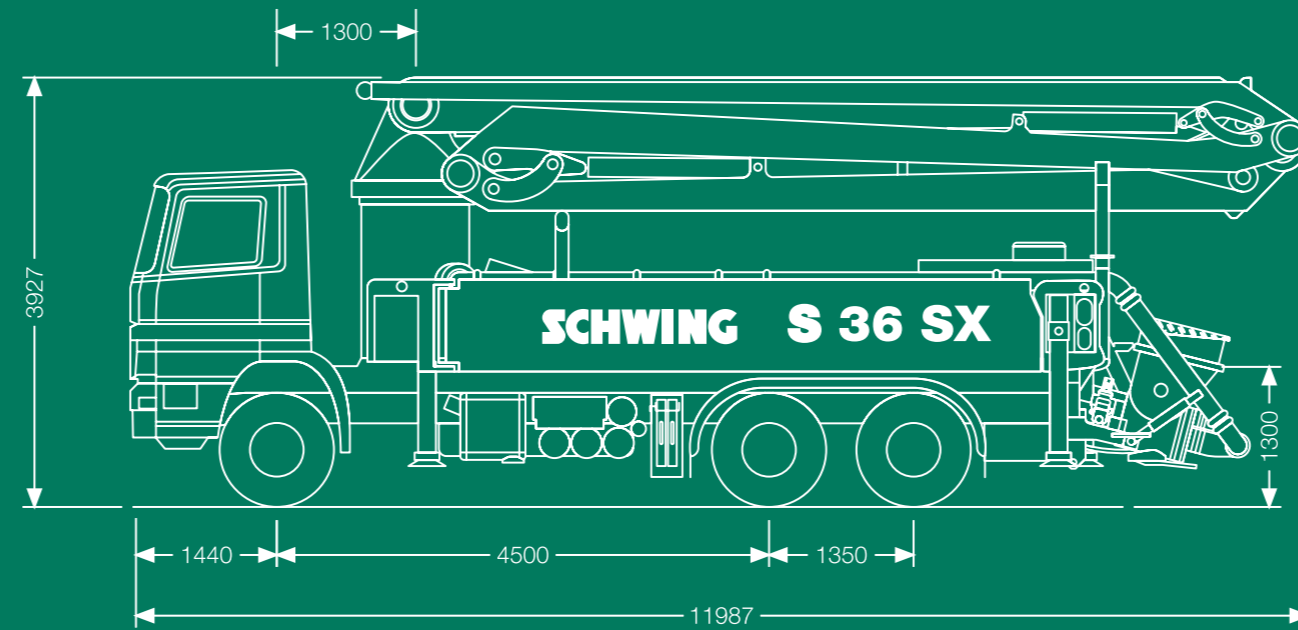


TECHNICAL DATA

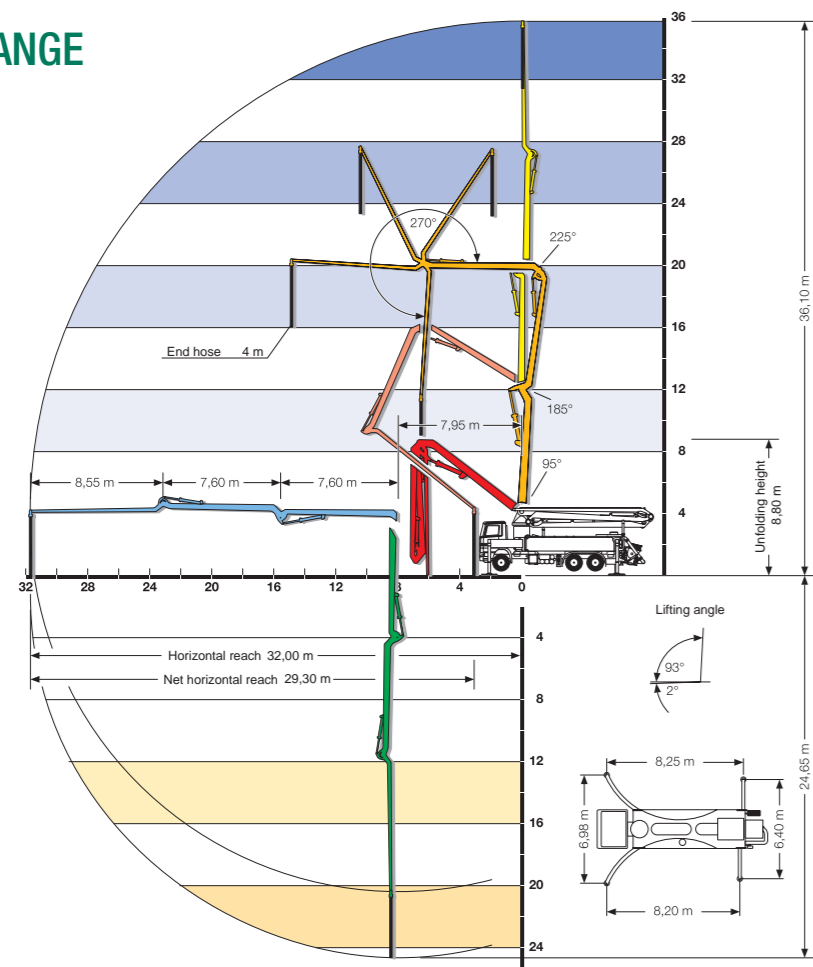
Pump battery		P 2023	P 2025	P 2525
Max. theor. output	m³/h	164	163	164
Max. number of strokes	min.	32	27	22
Max. concrete pressure	bar	85	85	85
Placing boom		36 RZ		
Delivery line diameter		DN 125		
Length of end hose	m	4,0		
Vertical reach	m	36,1		
Horizontal reach	m	32,0		
Number of articulations		4		
Height of articulations	m	4,1 / 12,05 / 19,65 / 27,25		
Slewing range		2 x 370°		
Outrigger load, front	kN	190		
Outrigger load, rear	kN	180		



TRUCK-MOUNTED CONCRETE PUMP S 36 SX

WORKING RANGE

S 36 SX



SCHWING-STETTER MOVES CONCRETE. WORLDWIDE.

Wherever concrete is produced and moved is where you will find Schwing-Stetter machinery.

With plants in Germany, Austria, USA, Brazil, Russia, China and India as well as with more than 100 sales and service facilities, the group of companies is always close to the customer.

Our wide range of products with something for every application is what makes Schwing-Stetter the No. 1 system supplier for concrete machinery worldwide.



SCHWING GMBH
P.O. Box 20 03 62 · D-44647 Herne / Germany
Phone (0) 23 25 / 9 87-0 · Fax (0) 23 25 / 7 29 22
www.schwing.de · info@schwing.de

Subject to modifications in the
interest of technical progress.
The exact standard scope of
delivery is detailed in the offer.

10311052_2000.04.10SK



SCHWING TRUCK-MOUNTED CONCRETE PUMP S 36 SX

THE PREMIUM RZ FOLD IN THE 30 M RANGE

This truck-mounted concrete pump offers advantages never before available in the 30 m class. The most significant of these are the curved outriggers and the RZ-fold placing boom.

Only SCHWING designs the RZ joints to maximize boom flexibility. Thus, the next-to-last section has a knuckle angle of 225°. The last Z-folding boom section has a 270° joint. This makes for unsurpassed mobility of the entire boom, enabling it to cover virtually any working area. The threading characteristics are excellent, even when the machine is positioned directly in front of a structure.

A special fabrication technology developed by SCHWING for the individual boom sections and the alignment of the pump line so close along the boom means that this placing boom can function without the otherwise necessary boom offsets. The pipe switches sides from section to section, so that both the individual sections and the joints are kept free of torsion.

Unlike the simple Z-folders, the end hose of this pump is caught automatically at the end of concreting when the boom is refolded.

The machine's turret, has a slewing range of 2 x 365°.

Thus, the operator can slew into the working position without being limited by any lateral obstacles, and without first having to return the turret to the base position.



The low height of the substructure makes possible SCHWING's typical lean silhouette and provides more than enough space for a large turret in which all pipelines are mounted for easy access. Where other manufacturers' trucks can only set up using awkward multiple-telescoping outriggers or folding outriggers, this machine sets new standards with the modern SX outrigger system. The one-piece front outriggers extend along an arc, and can fit into even the smallest gaps on the construction site thanks to their low height. The rear H-outriggers with a spread of 6.40 m extend to their drop points in a straight line.

All this makes for short setup and take down times. As the holding boxes for the curved outriggers do not cross, the middle of the base frame is free and creates space for tool boxes, hose boxes and more.

This configuration also enhances the accessibility of all hydraulic pumps and lines for easy maintenance and checking.

And above all, the SX outriggers free up the space necessary to accommodate a pump kit with a stroke length of 2.50 m. This minimizes your wear and energy costs by 23 % because fewer changeovers are required compared to the shorter pump kits.

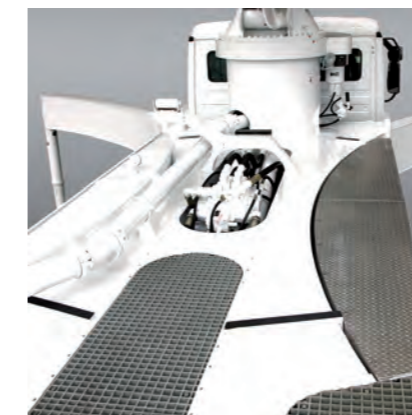
Together with the Rock Valve system and the open hydraulic circuit, this means better energy efficiency and greater economy of SCHWING concrete pumps.

All outrigger cylinders operate in a protective tube system, so that the cylinders and their piston rods are protected against mechanical damage and are not exposed to any buckling forces.

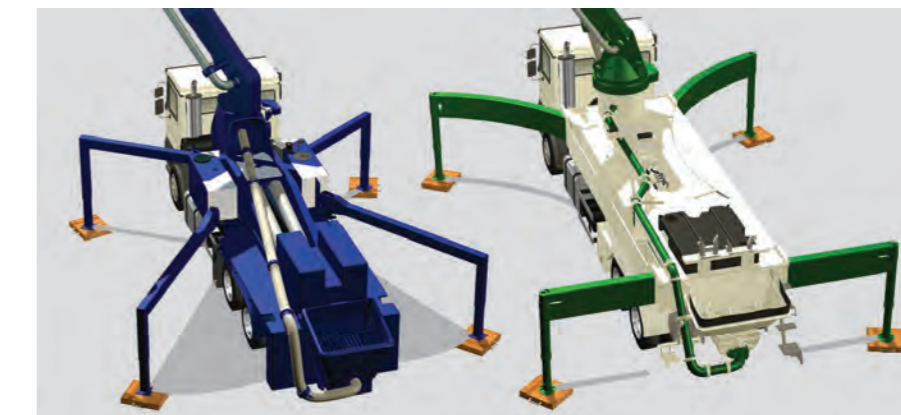
A large water tank, outrigger pads mounted on the outriggers, ample room for stowage, easily accessible storage areas, a wide range of optional equipment, and the high resale value round out the many advantages of this exceptional machine.



Only the SX outrigger system allows for enough space for the installation of a pumpkit with a 2,5m stroke. Operating costs are minimized by 23% due to less change overs compared to the shorter pumpkits.



The low height of the substructure makes possible the typical lean Schwing silhouette and provides ample room for the spacious turret for easy maintenance.



The combination of front Super X and rear H outriggers save time during a minimum space requiring set up. Compared to other space hogging pivot type outriggers the S 36 SX requires 80% smaller footprint during set up. The spread between the front and rear outriggers make ensures smooth pumping operations.



Only SCHWING produces a boom where the last section is Z-folded with a 270° joint. This gives the entire boom an outstanding flexibility,